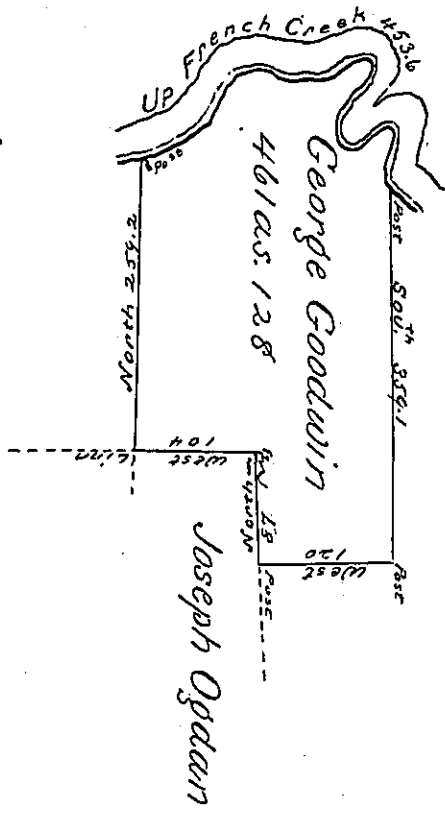


River Courses

- S. 71° E. 3.9
- N. 51° E. 22
- N. 69° E. 47
- N. 8° E. 46
- S. 27° E. 10
- N. 82½° E. 36
- S. 81° E. 16
- S. 63° E. 14
- S. 78° E. 14
- N. 61° E. 19
- N. 11° E. 22
- N. 71° E. 9
- S. ~~10~~ - 10
- S. 32 W. 34
- S. 27° E. 19
- N. 55° E. 36
- N. 81° E. 16
- S. 12° E. 12
- S. 61. W. 12
- S. 25¾ W. 25
- S. 48° E. 19
- N. 61° E. 11.7
- ps. 453.6

Pg - 20

John Gill



Norton Pryer

C 160-299

Situate on the East side of and adjoining French Creek in Allegheny County containing 461 ac. 128 ps. and Allowance of Six pcent for Roads &c. Surveyed the 12th. day of November 1794 In pursuance of a warrant dated 13th. April 1792.

Wm. Power Esqr.

To Danl. Brodhead Esqr. }  
 Surveyor General }

IN TESTIMONY that the above is a copy of the original remaining on file in the Department of Internal Affairs of Pennsylvania, made conformably to an Act of Assembly approved the 16th day of February, 1833, I have hereunto set my Hand and caused the Seal of said Department to be affixed at Harrisburg, this third day of October 1899

*James W. Fatta*  
 Secretary of Internal Affairs.

HENRY COUNTY